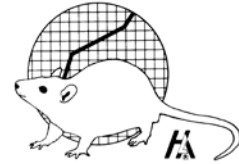


Hilltop Lab Animals, Inc.

Serving science for over 80 years



Viral Antibody Profile September 30, 2013

The following viral antibody profiles are the result of extensive serology. Guinea pig profiles include *Encephalitozoon cuniculi*. Profiles include CVF[®] rats, mice and guinea pigs being supplied by Hilltop Lab Animals, Inc.

OUTBRED RATS

SD -- Hla[®]:(SD)CVF[®]
 Wistar – Hla[®](WI)CVF[®]
 Long Evans - Hla[®](LE)CVF[®]
 Spontaneously Hypertensive -
 Hla[®](SHR)CVF[®]

INBRED RATS

Fischer 344 -- F344/NHla[®]CVF[®]
 Lewis -- LEW/Hla[®]CVF[®]

Method	Test	Results
ELISA	CARB	NEG
	Hant	NEG
	<i>M.arth</i>	NEG
	<i>M.pul</i>	NEG
	PVM	NEG
	RCV/SDA	NEG
	Reo	NEG
IFA	Send	NEG
	GDVII	NEG
	LCM	NEG
HAI	Parvo	NEG
	H-1	NEG
	KRV	NEG
PCR	RCMV	NEG
	Helico	NEG

OUTBRED MICE

Swiss – Hla[®]:(ICR)CVF[®]

INBRED MICE

BALB/c – BALB/cHla[®]CVF[®]
 C57BL/6[†] – C57BL/6NHla[®]CVF[®]

HYBRID MICE

IRCF1 – IRCF1/Hla[®]CVF[®]

Method	Test	Results
ELISA	CARB	NEG
	ECTRO	NEG
	EDIM	NEG
	GDVII	NEG
	Hant	NEG
	LCM	NEG
	M.Ad-1	NEG
	M.Ad-2	NEG
	MHV	NEG
	MNV	NEG
	MVM	NEG
	<i>Mpul</i>	NEG
	Parvo	NEG
	PVM	NEG
	Poly	NEG
	Reo	NEG
	Send	NEG
	IFA	MCMV
E. Cun		NEG
Tyz-M		NEG
PCR	Helico	NEG

Hilltop Lab Animals, Inc.

131 Hilltop Drive • Scottsdale, Pennsylvania 15683

(800) 245-6921 or (724) 887-8480 • FAX: (724) 887-3582 • www.HilltopLabs.com

Hilltop Lab Animals, Inc.

Serving science for over 80 years

Viral Antibody Profile
(Including CARB and *Mpul.*)

September 30, 2013
Page 2

OUTBRED GUINEA PIGS
Hartley – H1a[®]:(HA)CVF[®]

Method	Test	Results
ELISA	LCM	NEG
	PVM	NEG
	Reo ²	NEG
	Send	NEG
IFA	<i>E. cun</i>	NEG
	GP Adeno	NEG
<i>Bordetella</i>		NEG

MCMV Murine Cytomegalovirus
 MHV Mouse Hepatitis Virus
 MNV Murine Norovirus
M.Arth *Mycoplasma arthritidis*
M.Pul *Mycoplasma pulmonis*
 MVM Minute Virus of Mice
 Parvo Parvovirus
 PVM Pneumonia Virus of Mice
 Poly Polyoma Virus
 RCV/SDA Rat Coronavirus/
 Sialodacryoadenitis Viruses
 Reo Reovirus (Detects Reo 1, 2 & 3)
 Send Sendai Virus
 Tyz-M Tyzzer's

Description of test methods abbreviations:
 ELISA Enzyme Linked Immunosorbent Assay
 HAI Hemagglutination Inhibition
 IFA Immunofluorescence Assay
 PCR Polymerase Chain Reaction

Description of test abbreviations:
 CARB CAR Bacillus
 Ectro Ectromelia Virus
E.cun *Encephalitozoon cuniculi*
 EDIM Epizootic Diarrhea of Infant Mice
 GP Adeno Guinea Pig Adenovirus
 GDVII Theiler's Mouse Encephalomyelitis Virus
 Hant Hantaan Virus
 H-1 H-1 Virus
 Helico Helicobacter
 K K Virus
 KRV Kilham Rat Virus
 LCM Lymphocytic Choriomeningitis Virus
 M.Ad-1 Mouse Adenovirus (M.Ad-1)
 M.Ad-2 Mouse Adenovirus (M.Ad-2)

CVF[®] and H1a[®] are the registered trademarks of Hilltop Lab Animals, Inc., Scottsdale, Pennsylvania 15683.

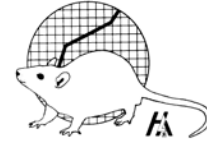
¹ F344 rat and C57BL/6 mouse stock originated from Taconic Farms, Germantown, New York.

² Reo in Guinea Pigs (Mouse sentinels all test negative)

H1a\newbind\health\general\HilltopLabs3Q13.doc

Hilltop Lab Animals, Inc.

Serving science for over 80 years



Gross Pathology • Parasitology • Bacteriology
September 30, 2013

The following are gross pathology, parasitology and bacteriology profiles for the CVF[®] rats, mice and guinea pigs currently being supplied by Hilltop Lab Animals, Inc.

	Rats					
	Hla [®] :(SD) CVF [®] (SD)	Hla [®] :(WI) CVF [®] (Wistar)	Hla [®] :(LE) CVF [®] (Long Evans)	Hla [®] :(SHR) CVF [®] (Spontaneously Hypertensive)	F344/NHla [®] CVF [®] (F344 ¹ Rats)	LEW/Hla [®] CVF [®] (Lewis)
Gross Pathology*	Normal	Normal	Normal	Normal	Normal	Normal
Parasitology						
External	NEG	NEG	NEG	NEG	NEG	NEG
Duodenum	NEG	NEG	NEG	NEG	NEG	NEG
Ileum	NEG	NEG	NEG	NEG	NEG	NEG
Cecum	NEG	NEG	NEG	NEG	NEG	NEG
Colon	NEG	NEG	NEG	NEG	NEG	NEG
Bladder	NEG	NEG	NEG	NEG	NEG	NEG
Comments:	All tests were negative for helminthes, pathogenic protozoa, ameba and ectoparasites.					
Bacteriology						
Oral	NEG	NEG	NEG	NEG	NEG	NEG
Fecal	NEG	NEG	NEG	NEG	NEG	NEG
Comments:	Primary bacterial pathogens were not detected by aerobic culture techniques.					

	Mice			
	Hla [®] :(ICR) CVF [®] (Swiss)	BALB/cHla [®] CVF [®] (BALB/c)	IRCF1/Hla [®] CVF [®] (IRCF1)	C57BL/6NHla [®] CVF [®] (C57BL/6 ¹)
Gross Pathology*	Normal	Normal	Normal	Normal
Parasitology				
External	NEG	NEG	NEG	NEG
Duodenum	NEG	NEG	NEG	NEG
Ileum	NEG	NEG	NEG	NEG
Cecum	NEG	NEG	NEG	NEG
Colon	NEG	NEG	NEG	NEG
Bladder	NEG	NEG	NEG	NEG
Comments:	All tests were negative for helminthes, pathogenic protozoa, ameba and ectoparasites.			
Bacteriology				
Oral	NEG	NEG	NEG	NEG
Fecal	NEG	NEG	NEG	NEG
Comments:	Primary bacterial pathogens were not detected by aerobic culture techniques.			

Hilltop Lab Animals, Inc.
131 Hilltop Drive • Scottsdale, Pennsylvania 15683
(800) 245-6921 or (724) 887-8480 • FAX: (724) 887-3582 • www.HilltopLabs.com

Hilltop Lab Animals, Inc.

Serving science for over 80 years

Gross Pathology • Parasitology •
September 30, 2013

Bacteriology
Page 2

	Guinea Pigs
	H1a [®] :(HA) CVF [®] (Hartley)
Gross Pathology*	Normal
Parasitology	
External	NEG
Duodenum	NEG
Ileum	NEG
Cecum	NEG
Colon	NEG
Bladder	NEG
Comments:	All tests were negative for helminthes, pathogenic protozoa, ameba and ectoparasites.
Bacteriology	
Oral	NEG
Fecal	NEG
Comments:	Primary bacterial pathogens were not detected by aerobic culture techniques.

The following is offered as supplemental information to the Bacteriology Profile.
Survey Protocol: Rodent Minimum Requirements

RESPIRATORY SYSTEM:

Direct 5% Sheep Blood Trypticase Soy Agar

Examine for:

- *Bordetella bronchiseptica*
- *Streptococcus pneumoniae* (Groups A, B, & C)
- *Pasteurella pneumotropica* and *P. Multocida*
- *Corynebacterium kutscheri*
- *Pseudomonas aeruginosa*
- *Klebsiella pneumoniae*
- *Klebsiella oxytoca*

Direct MacConkey Agar

Examine for:

- *Bordetella bronchiseptica*
- *Pasteurella pneumotropica* (abortive colonies)
- *Pseudomonas aeruginosa*
- *Klebsiella pneumoniae*
- *Klebsiella oxytoca*

TSB Broth for subculture at 24 hours to Phenylethyl Agar and MacConkey Agar

Examine Phenylethyl Agar for:

- *Streptococcus pneumoniae*
- *Corynebacterium kutscheri*

Examine MacConkey Agar for:

- *Bordetella bronchiseptica*
- *Pseudomonas aeruginosa*
- *Klebsiella pneumoniae*
- *Klebsiella oxytoca*

GASTROINTESTINAL SYSTEM:

Selenite Broth: Subculture at 24 hours to Brilliant Green Agar and MacConkey Agar

Examine both plates for Salmonella species

- *Pseudomonas aeruginosa*
- *Yersinia enterocolitica*

Direct 5% Sheep Blood Trypticase Soy Agar and MacConkey Agar

Examine both plates for *Klebsiella pneumoniae*

- *Klebsiella oxytoca*
- *Citrobacter freundii* (Var. 4280 mice)

GN Broth: Subculture at 24 hours to 5% Sheep Blood and MacConkey Agar Plates

Examine both plates for *Klebsiella pneumoniae*

- *Klebsiella oxytoca*
- *Citrobacter freundii* (Var. 4280 mice)
- *Yersinia enterocolitica*
- *Pseudomonas aeruginosa*
- *Shigella* spp.

Testing done annually for Rat Bite Fever -
Streptobacillusmoniliformis

*Tissues examined microscopically: heart, lung, liver, kidney, spleen, pancreas, salivary gland and node, jejunum, ileum, cecum, brain, eyes, harderian glands, nasal passages, middle ears.

Information provided by:

Hilltop Lab Animals, Inc.
131 Hilltop Drive
Scottsdale, PA 15683
(800) 245-6921 or (724) 887-8480
FAX: (724) 887-3582

H1a\newbind\health\general\HilltopLabs3q13.doc