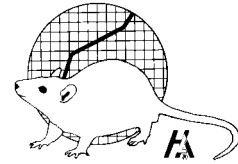


Hilltop Lab Animals, Inc.



Serving science for over 90 years

Viral Antibody Profile June 30, 2018

The following profiles are the result of extensive testing. Profiles include CVF[®] rats, mice and guinea pigs being supplied by Hilltop Lab Animals, Inc.

OUTBRED RATS

SD -- H1a[®]:(SD)CVF[®]
Wistar – H1a[®](WI)CVF[®]
Long Evans - H1a[®](LE)CVF[®]
Spontaneously Hypertensive -
H1a[®](SHR)CVF[®]

INBRED RATS

Fischer 344 -- F344/NH1a[®]CVF[®]
Lewis -- LEW/H1a[®]CVF[®]

| est | Results |
|--------------|---------|
| CARB | NEG |
| Helico | NEG |
| KRV | NEG |
| LCM | NEG |
| <i>M.pul</i> | NEG |
| Parvo | NEG |
| PVM | NEG |
| RCV/SDA | NEG |
| Reo | NEG |
| Send | NEG |

OUTBRED MICE

Swiss – H1a[®]:(ICR)CVF[®]

INBRED MICE

BALB/c – BALB/cH1a[®]CVF[®]
C57BL/6⁺ – C57BL/6NH1a[®]CVF[®]

HYBRID MICE

IRCF1 – IRCF1/H1a[®]CVF[®]

| Test | Results |
|-------------|---------|
| CARB | NEG |
| ECTRO | NEG |
| EDIM | NEG |
| Helico | NEG |
| LCM | NEG |
| M.Ad-1 | NEG |
| M.Ad-2 | NEG |
| MHV | NEG |
| MNV | NEG |
| MVM | NEG |
| <i>Mpul</i> | NEG |
| MPV1 | NEG |
| MPV2 | NEG |
| PVM | NEG |
| Poly | NEG |
| Reo | NEG |
| Send | NEG |
| TMEV | NEG |

Hilltop Lab Animals, Inc.

131 Hilltop Drive • Scottdale, Pennsylvania 15683

(800) 245-6921 or (724) 887-8480 • FAX: (724) 887-3582 • www.HilltopLabs.com

Hilltop Lab Animals, Inc.

Serving science for over 85 years

Viral Antibody Profile
(Including CARB and *Mpul.*)

June 30, 2018
Page 2

OUTBRED GUINEA PIGS
Hartley – Hla[®]:(HA)CVF[®]

| Test | Results |
|-------------------|---------|
| LCM | NEG |
| PVM | NEG |
| Reo | NEG |
| Send | NEG |
| <i>Bordetella</i> | NEG |
| | |

Reo Reovirus (Detects Reo 1, 2 & 3)
Send Sendai Virus
TMEV Theiler's Murine
Encephalomyelitis Virus

CVF[®] and Hla[®] are the registered trademarks of Hilltop Lab Animals, Inc., Scottsdale, Pennsylvania 15683.

¹ F344 rat and C57BL/6 mouse stock originated from Taconic Farms, Germantown, New York.

Description of test abbreviations:

CARB CAR Bacillus
Ectro Ectromelia Virus
EDIM Epizootic Diarrhea of Infant Mice
GP Adeno Guinea Pig Adenovirus
GDVII Theiler's Mouse
Encephalomyelitis Virus
Helico Helicobacter
KRV Kilham Rat Virus
LCM Lymphocytic Choriomeningitis
Virus
M.Ad-1 Mouse Adenovirus (M.Ad-1)
M.Ad-2 Mouse Adenovirus (M.Ad-2)
MCMV Murine Cytomegalovirus
MHV Mouse Hepatitis Virus
MNV Murine Norovirus
M.Pul *Mycoplasma pulmonis*
MPV1 Mouse Parvovirus Type 1
MPV2 Mouse Parvovirus Type 2
MVM Minute Virus of Mice
Parvo Parvovirus
PVM Pneumonia Virus of Mice
Poly Polyoma Virus
RCV/SDA Rat Coronavirus/
Sialodacryoadenitis Viruses

Hla\newbind\health\general\HilltopLabs2Q18C.doc

Hilltop Lab Animals, Inc.

131 Hilltop Drive • Scottsdale, Pennsylvania 15683

(800) 245-6921 or (724) 887-8480 • FAX: (724) 887-3582 • www.HilltopLabs.com

Hilltop Lab Animals, Inc.
131 Hilltop Drive • Scottsdale, Pennsylvania 15683
(800) 245-6921 or (724) 887-8480 • FAX: (724) 887-3582 • www.HilltopLabs.com